

# MediSlate<sup>+</sup>

MOBILE CLINICAL ASSISTANT



## Quick Start Guide

### MediSlate™ MCA i1040XT

#### Front

1. Microphone Array
2. RFID Reader Antenna
3. Carrying Handle
4. RFID Reader Trigger
5. Barcode Scanner Trigger
6. Ambient Light Sensor
7. Status Indicator LEDs

TL: RFID Active

TR: WiFi Connected

BL: Battery 1 Charge

BR: Battery 2 Charge

#### Front (cont.)

8. Power Button
9. Bluetooth ON/OFF
10. Camera Capture
11. Function Key
12. D-Pad + Enter
- 13-15. Programmable Keys
16. Security Key
17. Fingerprint Reader

#### Bottom

18. Docking Connector

#### Right Side

19. Barcode Scanner
20. DC Power Jack

Congratulations on your purchase of a **MediSlate™ MCA i1040XT** (mobile clinical assistant). Your MediSlate MCA, featuring a resistive touch screen that complies with the requirements of the Americans with Disabilities Act, was designed to be up and running quickly.

### What's in the Box

Your MediSlate MCA should come securely packaged in its shipping container along with the items listed below. Contact your dealer immediately if you find that anything is missing or damaged. *Note, however, that contents may be changed without notice.*

1. AC Adapter with Power Cord
2. Operating System Quick Start Guide
3. System Restore Disc (may include recovery image on the HDD in lieu of, or in addition to, disc)
4. This Quick Start Guide
5. Two (2) Standard Lithium-Ion Battery Packs
6. Stylus Pen with Tethering Strap (may come already attached to the MediSlate MCA)

### Setting Up Your MediSlate MCA

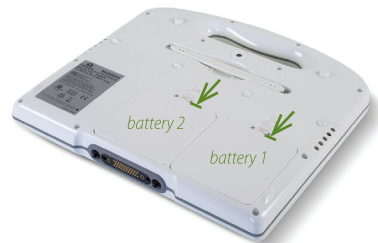
Please read the following steps to help you begin using your new MediSlate MCA i1040XT as quickly and easily as possible.

#### Step 1: Insert the Battery Packs

Turn the MediSlate MCA over and place it, screen down on a solid, clean, flat surface.

**CAUTION:** When turning over the MediSlate MCA, be careful not to place it on a rough or uneven surface that could scratch or damage the touch screen.

Align the batteries into their battery compartments and then slide the locking tabs down until they click securely into place. It does not matter which battery goes into which compartment, but if you are planning on running the MediSlate with only one battery, place it into the right hand compartment labeled as "battery 1".



*Align the batteries so the contacts touch and then place them so they sit flush to the back of the MediSlate MCA. Slide down the locking tabs all the way to secure the batteries.*

#### Step 2: Place the MediSlate MCA into the Docking Station (Windows XP Pro and Vista)

In order to complete the Windows XP Professional and Windows Vista installation, you should use a USB keyboard to answer some of the questions. As part of the sealed nature of the MediSlate MCA i1040XT, you will need to place it into the optional docking station so it can use the USB connectors. If you don't have access to the dock, you can still complete the installation, you will just need to edit the appropriate computer name, Administrator password and user's name(s) at a later time.

Before placing the MediSlate MCA into the docking station, locate the power cord that came with the dock and plug it into the DC Power port and then the other end into an external power jack. Orient the MediSlate MCA so that the docking connector is facing down toward the docking connector in the docking station. Carefully slide the MediSlate into the docking slot and press down carefully until you hear the docking station's electronic locks engage.

**IMPORTANT:** You should allow the batteries to charge fully before disconnecting the MediSlate MCA and running it on battery power for the first time. Optimal recommended charging before first use is 12 hours. Afterward, typical charging time is 2 - 3 hours per battery pack.

**NOTE:** When you first connect the MediSlate MCA into an external power source, or the docking station when it is plugged into an external power source, the battery charge indicators on the MediSlate MCA will begin to glow red. Once battery capacity has exceeded 10%, the indicators will change to orange. When each battery is fully charged, its respective indicator will turn green. When disconnected from a power source, the battery lights will shut off. If the indicators begin to flash orange, that signals that the battery OTP (over temperature protection) has activated and you should immediately disconnect the power, turn off the system and allow the batteries to cool down.



*Slide the MediSlate into the docking slot and press down carefully until you hear the electronic lock engage.*

*To disengage the electronic lock in order to remove the MediSlate MCA from the docking station, press the FN button and then press the Enter button on the D-pad.*

### Step 3: Attach a USB keyboard and any additional peripherals to the Docking Station

Plug a USB keyboard into any of the USB ports that are on either side of the docking station. If you plan on utilizing the dock's Ethernet port for a wired LAN, you can plug it in now. Also, attach any other peripherals you wish to use with the dock (mouse, optical drive, etc.)

### Step 4: Power on the MediSlate MCA

Locate the power (⏻) button near the top of the control panel on the front of the MediSlate. Press it until it emits a green glow (about 1 second) and then release it. The MediSlate MCA will now boot up.

### Step 5: Complete the Operating System Installation

When your system powers on for the first time, you might need to wait for Windows to configure your machine for set-up (**Windows Vista only**). This can take a few minutes, so be patient. After it finishes, your system will restart and you will be prompted to accept the licensing terms.

Windows (**all versions**) will then have a few questions for you to answer in order to localize and finish your installation. Refer to your operating system's manual for information on any of the questions you are unsure how to answer. When done, you will be taken to the Windows desktop (*Windows Vista will first measure your system's performance*).

### Step 6: Using the Stylus Pen and the Touch Screen

Unlike a standard laptop or desktop PC, navigating the operating system's user interface on the MediSlate MCA is performed using the stylus pen, or even your fingers.

**NOTE:** To place the stylus in its holder, press until it clicks into place. To remove the stylus, press down on one end, grab the other end, and pull it away from the back of the MediSlate MCA.

Navigating with a touch screen is different from navigating with a mouse. Hold the stylus pen as if you were writing with a standard pen. Instead of sliding the pen around the screen, just tap on what you want to interact with. Sliding the pen while lightly touching the tip to the screen will move the on-screen pointer around as if you were using a mouse and holding down the left mouse button. In other words, you would be performing what is known as a drag operation. Also, remember that since the screen is sensitive to the touch, resting your hand on the screen while using the pen might make the pointer react unpredictably.

**TIP:** When trying to select or activate something on the screen with the stylus pen, pay attention to the position of the pointer icon on the screen instead of the tip of the pen.

Tapping lightly on the screen will perform a standard left mouse button click. Tapping twice in rapid succession will perform a double-click. Holding the tip of the pen against the screen without moving it for about a second or so will perform a standard right mouse button click.

**Inputting Data:** You can use the **Tablet PC Input Panels** in Windows Vista to enter information via an On-Screen Keyboard, Character Pad or Writing Pad. Once enabled in the “Pen and Input Devices” control panel, you’ll find the edge of the Tablet PC Input Panel docked on the left-hand side of your screen. Tap on it once to activate the panel and slide it to the center of your desktop. Tap the “close” icon in the upper right corner of the panel to re-dock it.

For more information about using the input panels, see the Windows Quick Start guide that came with your MediSlate MCA or check out the Tablet PC Tutorials in Windows.

Another option for inputting data, both in Windows XP Professional and Windows Vista, is the Eyesboard™ Virtual Keyboard application included with all MediSlate MCAs. This resizable, on-screen virtual keyboard will allow you to type on the screen as you would with a standard laptop keyboard. Just double-tap on the application’s short-cut icon located on the desktop to begin using it. You can access the Eyesboard user’s manual by tapping on the “?” button in the upper right hand corner of the keyboard.

**NOTE:** If your MediSlate MCA didn’t have the Eyesboard Virtual Keyboard preinstalled when you received your system, you can download it from our website at [www.tabletkiosk.com/support/downloads.asp](http://www.tabletkiosk.com/support/downloads.asp).

## Controlling your MediSlate MCA

The MediSlate MCA i1040XT features extended functionality by means of applications created using Intel’s MCA SDK, and via the 11 function buttons on the system’s front face.

Button	Function Description
8	<b>Power / Suspend (indicator glows green when powered on)</b> Turns system on and off. System can enter standby mode automatically and indicator light will blink to signify this state. Press momentarily to enter/exit standby mode. Press and hold for 3 - 4 seconds to force the system to power down. Settings can be changed in Windows’ “Power Options” control panel.
9	<b>Bluetooth Transmitter Power (glows blue when powered on)</b> Press to power on or off the internal Bluetooth module’s transmitter. The module will automatically power off after a user defined set period of time to conserve battery power. Transmitter must be powered on before attempting to connect a Bluetooth device.
10	<b>Camera Power / Capture</b> Pressing this button will initially power on the internal camera (the camera’s lens is located on the back of the MediSlate MCA, just below the handle and above the stylus pen holder). Subsequent presses will activate the camera’s image capture function.
11	<b>Function Key</b> Used in combination with the D-Pad, User Programmable Button 3 and the Security Key to activate secondary functionality.
12	<b>D-Pad with Enter Key</b> Allows navigation of keyboard aware navigation functions. Moving the stick up, down, left, or right emulates the corresponding arrow key, while pressing on the stick invokes the Enter key. With Function Key ON: up/down = volume +/-, left/right = screen brightness +/-.
13 14 15	<b>User Programmable Keys 1 - 3</b> User programmable using the Intel MCA Configuration Editor application. Button 3, when pressed with Function Key ON: Enables/Disables optional 3G module if installed in system.
16	<b>Security Key</b> Functions as SAS (Ctrl+Alt+Delete). With Function Key ON: Manually Locks/Unlocks Touch Screen (touch screen can be set to lock automatically after a defined period of inactivity).

4

**RFID Reader Trigger**

Activates the RFID reader (requires an application that supports RFID to read data). Place tag of object directly in front of the reader's antenna (2) and then press this button to read data. Reader will power off after a certain period of inactivity.

5

**Barcode Scanner Trigger**

Activates the barcode reader's scanner (19). Programmable using the Intel MCA Configuration Editor. Subsequent presses will activate the barcode scanner. Scanner will power off after a certain period of inactivity.

Numbers refer to front cover legend

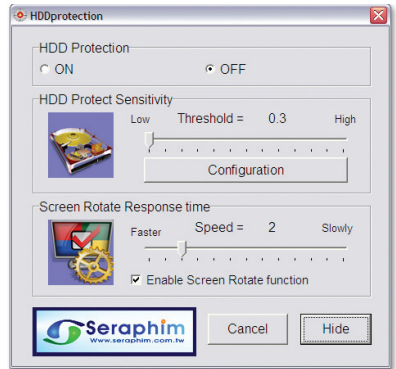
**Hard Drive Protection and Automatic Screen Rotation**

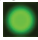
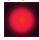
The HDDprotection utility provides the user the ability to enable/disable protection of data on the hard drive from physical abnormalities, as well as set preferences for the automatic screen rotation.

To launch the application, tap and hold on the  icon in the Control Palette of the Windows Taskbar. When the pop-up menu appears, tap on "Show". You will be presented with the application's interface.

**HDD Protection**, when turned ON, will automatically park the hard drive's heads to prevent damage to the drive's platters in case of a sudden impact to the system's chassis (such as hitting the ground when dropped).

The **HDD Protect Sensitivity** Threshold slider allows you to adjust how much vibrational force is required before the system parks the drive heads. Before adjusting the sensitivity, be aware that when the drive's heads are parked, no read/write operations will be possible. So, if while using the MediSlate MCA on-the-go, you begin noticing errors from applications that regularly check for data changes/updates, adjust the threshold higher. In a typical situation, the heads will automatically unpark after approximately five seconds when no motion above the threshold level is detected.



To quickly enable or disable the HDD Protection function without launching this application, simply tap on the HDDprotection icon in the Task Bar.  means protection is enabled,  means it is disabled.

Automatic Screen Rotation is possible due to the MediSlate MCA's internal "G Sensor". When you rotate the orientation of the MediSlate MCA, the screen will automatically adjust to match. The time it takes the rotation to occur can be controlled with the "Speed" slider. To disable this feature, simply uncheck the "Enable Screen Rotation function" check box.

**TIP:** If you are having trouble getting the screen to auto rotate properly, make sure to adjust the tilt of the MediSlate MCA so that it is more perpendicular to the ground when rotating it.

When you are finished making adjustments to the application, simply tap on the "Hide" button to dismiss the application's interface.

**Adjusting, Locking and Calibrating the Touch Screen**

The **TouchKit** utility application allows for changes to the default behavior of the MediSlate MCA i1040XT's touch screen. Double-tap on the application's icon located on the desktop.


Options in the “Setting” tab allows you to control how the screen behaves as a mouse type input device, while those in the “Edge Compensation” tab adjusts how the screen tracks contacts (or taps) close to the screen’s edges.

To enable or disable the touch screen’s auto locking feature, go to the “Setting” tab and tap on the “Option” button at the bottom of the windows. The “Option” window will open allowing you to not only enable or disable this feature, but also to adjust the time of inactivity before the screen locks. To unlock the screen, simply press the MediSlate MCA’s “FN” button on the front panel and then press the “Security” button.


If you find, while using your MediSlate MCA, that the position of the pointer arrow isn’t matching the touch of the stylus, you should calibrate the touch screen.

1. Locate the Shortcut icon to the **TouchKit** Utility on your desktop and double-tap it to launch the **TouchKit** Utility application.
2. Tap on the “Tools” tab. The default “4-Point” calibration should be sufficient in most instances for creating an accurate calibration setting.
3. Tap on the “4 Points Calibration” button to begin the calibration routine. Tap on the center point in each of the red crosses that appear. When finished, you’ll be returned to the **TouchKit** Utility Calibration panel.

NOTE: If you ever find that you cannot drag elements around the screen, or you cannot write in the input panels, your touch screen is most likely set to something other than “Normal Mouse” mode. In the **TouchKit** Utility, tap on the “Setting” tab and locate the large “mode” button at the bottom of the windows. Tap on it until it reads “Normal Mode” and then tap the “Apply” button.

TIP: To more quickly access any of the TouchKit’s settings, simply tap and hold on the  icon in the Task bar. A pop-up menu will appear that will take you straight to the features listed above.

## Connecting to a Wireless Network

1. Open the Intel PROSet Wireless Application by double-tapping on the  icon in the Window’s Task bar.
2. If the wireless transmitter is off, you will see a message that tells you that “Wireless is turned off. Select “Wireless On” below to enable wireless networking.” Do so by tapping on the button at the bottom of the window.
3. From the list that appears, tap to select the network you wish to connect to and then tap the “Connect” button. If no wireless networks appear after a few moments, tap on the refresh button located on the right side of the dialog box.
4. If the wireless network you are attempting to connect to is security-enabled, you will see a dialog box requesting a network key. The key (your network administrator should be able to supply this to you) must be entered correctly (in both text fields in Vista) or you will not be able to successfully connect to the network.

If you entered the network key correctly, you should now be connected to the wireless network. If it appears you are connected to the network, but have limited or no actual connectivity, it is most likely due to an improperly entered network key. Disconnect from the network by tapping the “Disconnect” button and try to connect again. If you continue to have trouble connecting, contact your network administrator for assistance.

## Connecting with a Wireless Bluetooth Device

1. Turn on the Bluetooth transmitter using the Bluetooth power button on the front of your MediSlate MCA.
2. Double-tap on the Bluetooth icon on the desktop or in the Task bar to start the Bluetooth service and open the “My Bluetooth Places” window.
3. To add a Bluetooth device, tap on the “Add Bluetooth Device” item in the left-hand pane.


4. Turn on the discovery service on your Bluetooth device.
5. Tap on the “Next >” button to begin the Bluetooth Setup Wizard.

Follow the steps presented by the wizard to complete the pairing process. Make sure that the entire process is completed while your Bluetooth device is still in Discovery mode or the pairing process will fail. If necessary, you can restart the Discovery process on your device and redo any incomplete steps.

## Using the Fingerprint Reader

Using the fingerprint reader on the MediSlate MCA along with the included DigitalPersona software will allow you to log into Windows without entering a user name and password, log onto websites, and switch between users on a multi-user system simply by swiping your finger across the fingerprint reader.

To get started, you will need to enroll your fingerprints.

1. Tap and hold on the  icon in the Task bar to open the DigitalPersona pop-up menu..
2. From the menu, tap on “Fingerprint Enrollment...”
3. The DigitalPersona Fingerprint Enrollment Wizard will open and walk you through the enrollment process. Up to ten sets of fingerprints can be saved in the system. Note that in order to enroll your fingerprints and use this feature, you should password protect your user account. The wizard will give you the opportunity to do so if you haven't already.

After you have enrolled your fingerprints, you can manage additional users and passwords by using the Fingerprint Logon Manager from the DigitalPersona pop-up menu.

For more information about using the DigitalPersona application, go to “START > Programs > DigitalPersona Personal” and tap on the “?Help” item to access the on-screen help system.

## Programming the Function Buttons

Using the Intel MCA Configuration Editor application, you can program the buttons on the MediSlate to activate different functions or launch specified programs. Each application can have its own unique set of functions, or you can program the default set to work with all applications.

To change the default behavior of any of the three programmable function buttons:

1. Open the Intel MCA Configuration Editor by tapping on “START > All Programs > Intel > MCA Platform Driver > MCA Configuration Editor”.
2. In the navigation tree on the left, tap on the pluses to open “MCA Application > DefaultHandler Action > Default Exe” and locate the three keys “MedAppA”, “MedAppB”, and “MedAppC”. Tap on “MedAppA” to open the button properties for Function 1 button.
3. To change the application it launches, double-tap in the value cell to select the current contents. Either type in the name and path of the new application, or tap on the [...] button to the right and browse to the desired application.

You can also enter Command Line options as well as allowing or disallowing multiple instances of the program from being spawned with subsequent presses of the button. MedAppB corresponds to Function 2 button, while MedAppC corresponds to Function 3 button.

Please access the application's onscreen documentation by tapping on “Help > Help Contents” or hitting the F1 button on your keyboard/Eyesboard Virtual Keyboard for more information on using the MCA Configuration Editor.

# MediSlate

---

MOBILE CLINICAL ASSISTANT



2832 Columbia Street, Torrance, CA 90503  
310.782.1201 tel 310.782.1205 fax  
[www.tabletkiosk.com](http://www.tabletkiosk.com)