



Bluetooth® Keyboard Set-up Guide



Connecting the keyboard

Before you can begin to use your new Bluetooth® keyboard, it must first be paired with the computer on which you wish to use it.

To pair your keyboard:

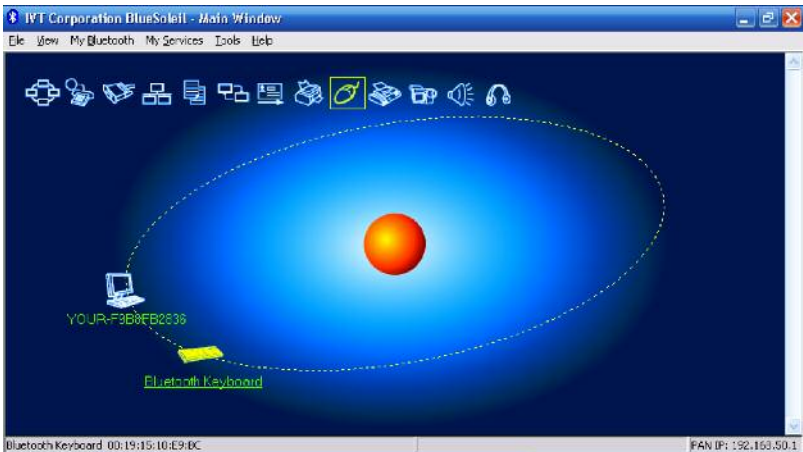
1. Locate the **Blue Soleil** application, either in your **START Menu** or on the desktop and launch it.



2. After the program launches, you should see a Bluetooth® icon in the **System Tray of your Windows Task Bar**. When the icon changes from grey to blue, click on it.



3. Open your Bluetooth® keyboard and locate the small round button in the upper right hand corner and press it to place the keyboard into discovery mode. A yellow LED should begin blinking.
4. The IVT Corporation Blue Soleil main application window will appear. Double-click on the sun in the center of the window. This tells Blue Soleil to search for new Bluetooth® devices.

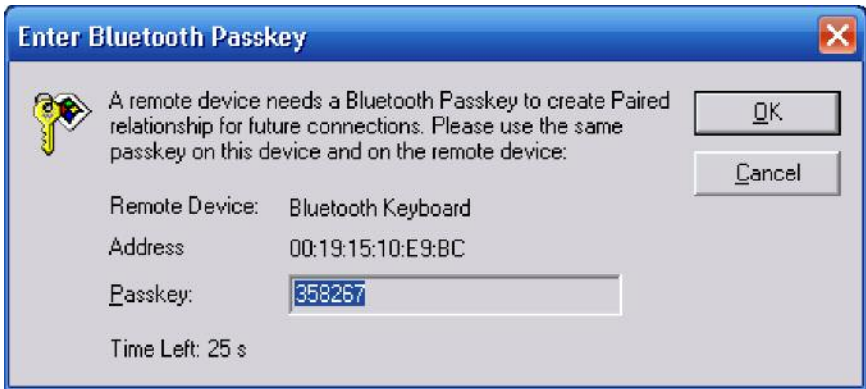


5. When Blue Soleil discovers a nearby Bluetooth® device, an icon will appear on the screen orbiting around the Sun. When the keyboard icon appears, double-click on it to begin the authorization process.

- The mouse icon at the top of the screen will turn yellow. This identifies the Human Device Interface Service. Verify that the yellow LED light on the keyboard is still blinking and then click on the mouse icon.



- A dialog box will appear prompting you to enter the Bluetooth® Passkey. Using the keyboard, type in the code displayed in the Passkey field of the dialog box.



- Your Bluetooth® keyboard should now be successfully paired with your PC and ready to use.

Troubleshooting Tips

- Make sure that the Bluetooth® icon in the System Tray has changed from grey to blue before clicking on it to launch the Blue Soleil application window, as this indicates that the Bluetooth® service has been successfully activated.
- Make sure that the yellow LED on the keyboard is blinking before double-clicking on the sun in the center of the application window to initiate the discovery process as the keyboard needs to enter discovery mode before the search can be successful.
- When entering the passkey, it is vital that the key be properly entered from the **Bluetooth® keyboard itself**, and not via the on-screen keyboard or Dial Keys application. Also, make sure to press the “Enter” key to submit the passkey entry.



386 Beech Avenue, Suite 6, Torrance, California 90501
310 782 1201 tel 310 782 1205 fax www.tabletkiosk.com

©2007 Sand Dune Ventures, Inc. All rights reserved. All product information is subject to change without notice. Sahara Slate PC is a registered trademark. eo, Sahara Touch-It Tablet, Sahara Pen Tablet, and TabletKiosk are trademarks or service marks of Sand Dune Ventures, Inc. in the United States and/or other countries. Microsoft Windows, Window XP, and Window XP Tablet PC edition are either registered trademarks or trademarks of Microsoft Corporation in the United States and/or other countries. BlueSoleil is copyright 2006 IVT Corporation. All Rights Reserved. The Bluetooth® word mark and logos are owned by the Bluetooth SIG, Inc. and any use of such marks by TabletKiosk is under license.